

ALV2 (ALVB)-P series/ LOCK (ANSI TYPE)

Handle & Color Variation



ALV2 (ALVB) UPHD476-3 (ST)



ALV2 (ALVB) UPHD66-3 (BS)

The pressed stainless steel escutcheon is available as standard in 5 high-quality finishes.

Type 478 Handle


 Satin Stainless Steel Finish (ST)
 Key Override available as an option.

Type 66 Handle



Polished Stainless Steel Finish (SB)

Type 67 Handle



Satin Brass Finish (BS)

Type 74 Handle



Polished Brass Finish (YB)

Type 476 Handle



Mid Bronze Finish (CB)

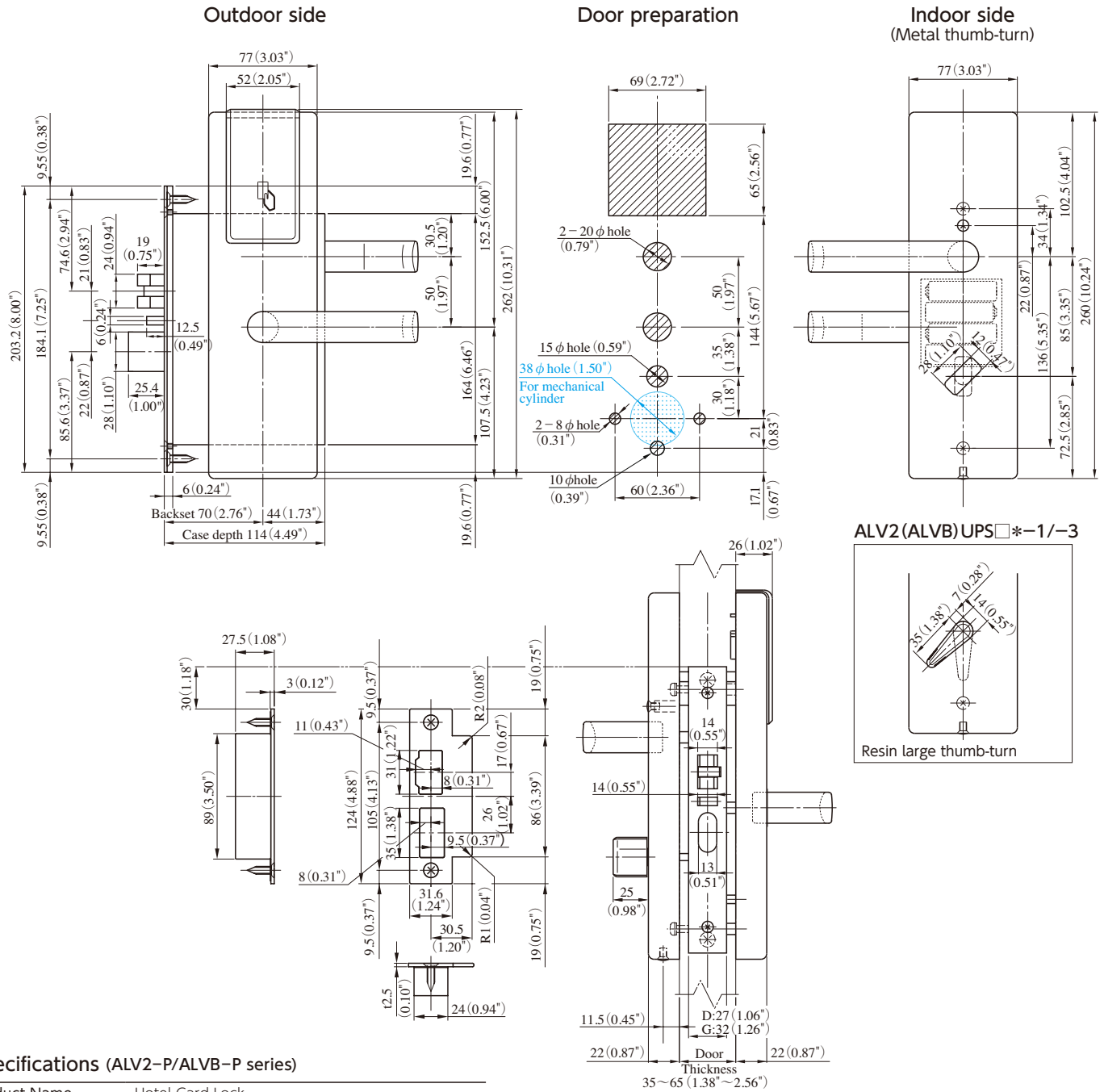
**TOMORROW
IS TODAY.**

 abiline Polska sp. z o.o.sp.k.
 TAX no. 7773229932

 Register address:
 Grunwaldzka street
 62-064 Plewiska
 Poland

 Correspondence address: + 48 733 100 761
 office@abiline.pl
 www.abiline.pl
 www.abilinegroup.com

Detail Drawing



Specifications (ALV2-P/ALVB-P series)

Product Name	Hotel Card Lock with cylinder : ALV2 (ALVB) UPH □ * - 1 without cylinder : ALV2 (ALVB) UPH □ * - 3
Product Number	□ = D : 27mm , G : 32mm * shows a handle symbol
Mountable Handles	66 · 67 · 74 · 476 · 478
Mountable Cylinders	U9
Backset	70mm
Material/Finish	Satin Stainless Steel (ST) Polished Stainless Steel (SB) Satin Brass (BS) Polished Brass (YB) Mid Bronze (CB)
Door thickness	35 ~ 65mm
Usability	Left-hand and right-hand usable (inward opening)
Power Supply	4 AA alkaline batteries
Mobile key	only ALVB is available